

Supply packing type DOT Half Ton Cylinder

Upright returnable DOT cylinder equipped with forklift lifting attachment incorporated into the foot ring, fitted with liquid valve and gas valve designed for a CGA 660 connection.



Used for- HFC227ea, HFC-236fa, HFC-125

Start condition

- Full clean agent supply cylinder on your transferring spot.
- Receiving cylinder should be cleaned to eliminate contamination by air and suitable transfer of clean agent.

Safety requirements

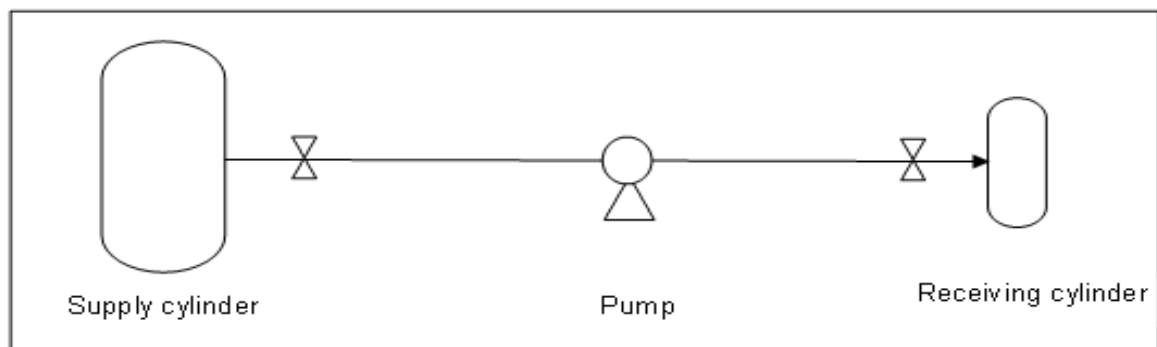
See MSDS (material safety data sheet).

Facilities required

- Weight-bridge (or other indication on amounts).
- Double skin flexible hose with outside wire –twisted reinforcement.
- Pump (centrifugal or vane pump).

Procedure steps

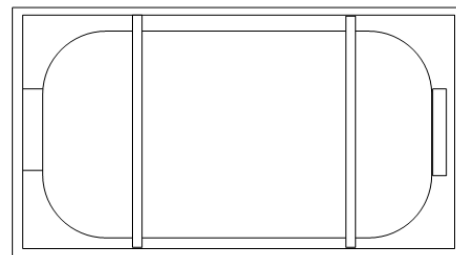
- Check gross-weight of clean agent supply cylinder.
- Check liquid and gas valve in good condition.
- Connect the gas phase valve of the supply cylinder to the gas phase valve of the receiving cylinder with a double skin flexible hose, likewise, the liquid phase valve to the liquid phase valve with pipes connected to a pump suitable for liquefied gas.
- Open all the valves and allow the pump transfer the liquefied gas into the receiving cylinder.
- When expected quantity gas transferred into the receiving cylinder, close liquid phase valves immediately at first and then the gas phase valves.
- Turn off the pump and disconnect the hose.



Supply packing type ISO Container

ISO tank with acme 1-3/4" valves for vapor transferring and acme 3-1/4" valve for liquid transferring.

Used for- HFC227ea, HFC-236fa, HFC-125, FK5-1-12



Start condition

- Full clean agent ISO tank on your transferring spot.
- Receiving tank should be cleaned to eliminate contamination by air and suitable transfer of clean agent.

Safety requirements

See MSDS (material safety data sheet).

Facilities required

- Weight-bridge (or other indication on amounts).
- Double skin flexible hose with outside wire –twisted reinforcement.
- Pump (diaphragm pump).

Procedure steps

- Check gross-weight of clean agent ISO tank.
- Check liquid and gas valve in good condition.
- Connect the liquid phase valve of ISO tank to the vapor phase valve of receiving tank with pipes connected to a pump suitable for both liquid and vapor phase clean agent. Connect the gas phase valve of the supply ISO tank to the vapor phase valve of the receiving tank with a double skin flexible hose,
- Open all the valves and allow the pump transfer the liquefied gas into the receiving tank.
- When expected quantity gas transferred into the receiving tank, close all valves.
- Turn off the pump and disconnect the hose.

